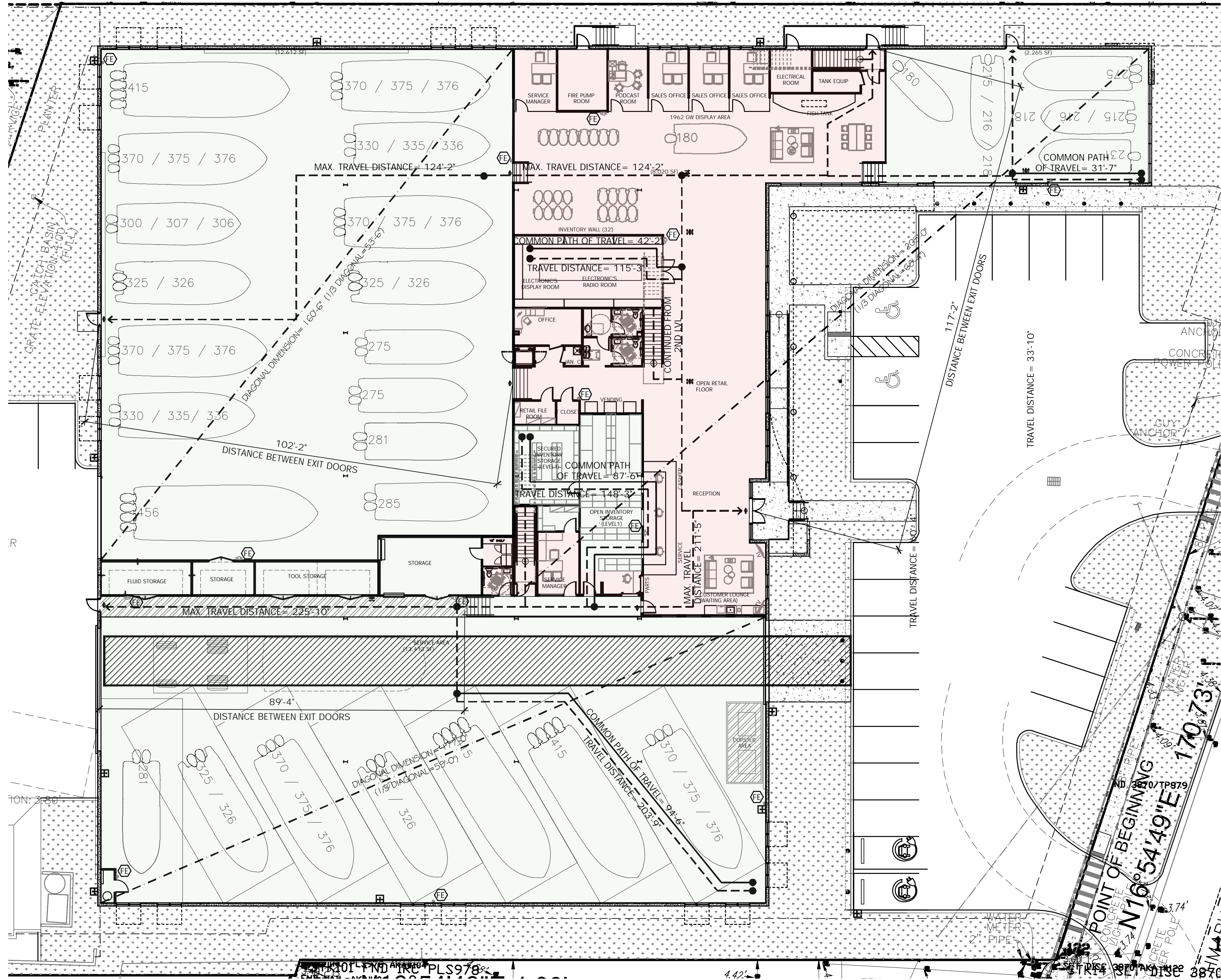


E1

NOT USED



A1

LIFE SAFETY GROUND FLOOR PLAN

1/16" = 1'-0"

0 5 10 20

0 5 10 20

GENERAL CODE INFORMATION:

- FLORIDA BUILDING CODE 2023 (FBC), 8TH EDITION
- FLORIDA FIRE PREVENTION CODE (FFPC) 8TH EDITION, EFFECTIVE DEC. 31, 2023
- INCLUDES NFPA 101, 2021 EDITION & NFPA 1, 2021 EDITION, & NFPA 303, 2021 EDITION & STATE STATUTES (ADOPTED REFERENCED PUBLICATIONS FOUND HEREIN)

BUILDING CONSTRUCTION TYPE AND OCCUPANCY CLASSIFICATION

TYPE OF CONSTRUCTION: TYPE II-B, (SPRINKLERED)

BUILDING HEIGHT (PERMITTED): 3 STORIES

BUILDING HEIGHT (PROPOSED): 2 STORY.

USE CLASSIFICATION (PER 508.4): NON-SEPARATED, MIXED USE, S-1 (DRY BOAT STORAGE-INDOOR) B (BUSINESS)

CONSTRUCTION TYPE AND OCCUPANCY CLASSIFICATION

CONSTRUCTION TYPE CLASSIFICATION: TYPE II-B (SPRINKLERED)

CLASSIFICATION OF HAZARD OF CONTENTS: ORDINARY HAZARD AS DEFINED IN FBC 2023, SECTION 311.2 & NFPA-101, SECTION 6.2.2.2 IN FFPC.

STORAGE (S-1): 29,062.42 S.F. / 500 GROSS = 58.12 OCC.

BUSINESS (B): 14,262.17 S.F. / 150 GROSS = 95.08 OCC.

TOTAL: 154 OCC.

GROSS BUILDING AREA: 43,324.63 S.F.

LIFE SAFETY INFORMATION (1ST FLOOR)				
	FBC SECT.	REQUIRED	PROVIDED	
MIN. WIDTH @ EXIT DOOR	1010.1.1	32 IN.	32" CLEAR	
COMMON PATH OF TRAVEL	1006.2.1	100 FEET	94'-6"	
EXIT ACCESS TRAVEL DISTANCE	1017.2	250 FEET	225'-10"	
MIN. WIDTH @ CORRIDOR	1020.3	44 IN.	N/A	
DEAD END CORRIDOR	1020.5	50 FEET	N/A	
NUMBER OF EXITS	1006.2.1	2	5	
MIN. DIST. BETWEEN EXIT DOORS ALLOWED (1/3 OF THE LENGTH OF THE MAX. OVERALL DIAGONAL DIM.)	1007.1.1	REFER TO PLAN	REFER TO PLAN	
FIRE EXTINGUISHER (F.E.)		16	16	
SPRINKLER SYSTEM		YES		
NOTE: PROVIDE FIRE EXTINGUISHERS IN ACCORDANCE WITH SPECIFICATIONS AND LOCAL JURISDICTION. 1 PORTABLE 2-A FIRE EXTINGUISHER REQUIRED BASED ON 3,000SF = 5- MAX DISTANCE 75' (SEE FLOOR PLAN FOR LOCATION).				

LIFE SAFETY INFORMATION (2ND FLOOR)				
	FBC SECT.	REQUIRED	PROVIDED	
MIN. WIDTH @ EXIT DOOR	1010.1.1	32 IN.	32" CLEAR	
COMMON PATH OF TRAVEL	1006.2.1	100 FEET	71'-7"	
EXIT ACCESS TRAVEL DISTANCE	1017.2	250 FEET	225'-10"	
MIN. WIDTH @ CORRIDOR	1020.3	44 IN.	60 IN.	
DEAD END CORRIDOR	1020.5	50 FEET	N/A	
NUMBER OF EXITS	1006.2.1	2	3	
MIN. DIST. BETWEEN EXIT DOORS ALLOWED (1/3 OF THE LENGTH OF THE MAX. OVERALL DIAGONAL DIM.)	1007.1.1	REFER TO PLAN	REFER TO PLAN	
FIRE EXTINGUISHER (F.E.)		3	3	
SPRINKLER SYSTEM		YES		
NOTE: PROVIDE FIRE EXTINGUISHERS IN ACCORDANCE WITH SPECIFICATIONS AND LOCAL JURISDICTION. 1 PORTABLE 2-A FIRE EXTINGUISHER REQUIRED BASED ON 3,000SF = 5- MAX DISTANCE 75' (SEE FLOOR PLAN FOR LOCATION).				

FBCP TABLE 403.1 (STORAGE)					
	W/C	UR.	LAV.	DRINKING FOUNTAINS	SERVICE SINK
REQUIRED	1 PER 100	N/A	1 PER 100	1 PER 1000	1
PROVIDED	2	N/A	2	2	1
PROVIDED	6	-	8	1	2
FBCP TABLE 403.1 (MERCANTILE)					
	W/C	UR.	LAV.	DRINKING FOUNTAINS	SERVICE SINK
REQUIRED	1 PER 500	N/A	1 PER 750	1 PER 1000	1
PROVIDED	1	N/A	1	1	1
PROVIDED	6	-	8	1	2

B6

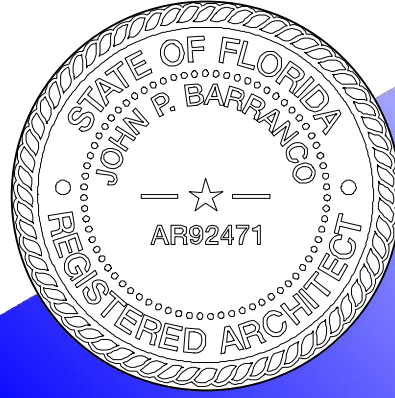
CODE ANALYSIS

- 1 HR FIRE RATED WALL. REFER TO SHEET A-501.
- FIRE EXTINGUISHER.
- TRAVEL DISTANCE.
- COMMON PATH.
- INDICATES EXIT SIGN
- LIGHTING FIXTURE WITH EMERGENCY BATTERY PACK. REFER TO ELECTRICAL DRAWINGS
- INDICATES KNOX BOX LOCATION

A6

LEGEND

PROPOSED SITE IMPROVEMENTS FOR:
POMPANO BEACH MARINE CENTER



DESIGNED: JPB
DRAWN: JO/SRS
CHECKED: JPB
DATE: 06.27.2025
COMM: 231120

this document or parts thereof may not be reproduced in any form without permission copyrighted material ©

REVISIONS

GROUND FLOOR PLAN

SITE PLAN APPROVAL

A-101

701 FEDERAL HIGHWAY POMPANO BEACH, FL 33062

barranco gonzalez • architect • planning • interior design

phone: (954) 961-7685 fax: (954) 961-7685 mail: info@bgarchitecture.com

1915 southeast 4th avenue

consultant